

CENTRAL TRI-COUNTY SOIL & WATER CONSERVATION DISTRICT

2506 ROUTE 66, MORIARTY, NM
505.832.1111 / www.ctcswcd.org

**SPRING NEWSLETTER
VOLUME 10 ISSUE 1**

Serving southern Santa Fe, eastern Bernalillo, and
northern Torrance counties of central New Mexico.



CENTRAL TRI-COUNTY SWCD COST SHARE PROGRAM

The Central Tri-County SWCD Cost Share Applications will be accepted April 13, 2026 - May 29, 2026.

Rainwater Harvesting is a top priority for the Central Tri-County SWCD. Other projects completed with the assistance of the district's cost-share assistance program include:

- Irrigation Pipeline
- Cholla Removal
- Livestock Pipeline
- Windbreak & Drip Irrigation Systems
- Diversions
- Brush Management
- Critical Area Planting
- Forest Stand Improvement
- Range Planting
- Cross Fencing
- Shade Balls



Please call the office at 505.832.1111 or visit our website at www.ctcswcd.org to download an application and full program guidelines.

CENTRAL TRI-COUNTY SOIL & WATER CONSERVATION DISTRICT 2026-2027 Cost Share Guidelines

Eligible Applicants: Any person addressing a natural resource problem who owns land within the Central Tri-County Soil & Water Conservation District boundaries is eligible to apply for a cost-share conservation project. Properties within city limits are not eligible.

Applications: Applications will be accepted from April 13, 2026 - May 29, 2026. Each application will be reviewed and ranked based on conservation merit and benefit to natural resources, and estimated project costs.

Reimbursement: Payments will be made on 85% of the actual cost of the project. The maximum reimbursement payment for all projects is \$10,000. Only practice applied for, planned, and completed within the contract time frame July 1, 2026 - June 30, 2027) are reimbursable.

Download the full application packet at www.ctcswcd.org.

WHAT IS A CONSERVATION DISTRICT?

Each Soil and Water Conservation District is governed by a five- or seven-member volunteer board.

Five supervisor positions are elected by the landowners of the district, and two members are appointed by the SWCD board. The board may also appoint non-voting associate members.

Through a resolution, districts may hold referendums to vote for a mill levy for the property owners of the district. A mill levy is one mill of one third of a property's net taxable value (i.e., property valued at \$100,000.00 is assessed 33.33 per year mill levy). The mill levy is assessed at the county tax assessor's office and provided to the district monthly.

Other sources of funding include grant programs obtained by the district, cooperating funds with other agencies, and in-kind contributions.

A referendum for the formation of the Central Tri-County Soil & Water Conservation District was carried by popular vote of landowners, as provided in the New Mexico Soil & Water Conservation District Law. The Certificate of Organization was issued on September 27, 1941.

The Mission of the Central Tri-County Soil & Water Conservation District is to protect, restore, enhance, and promote the wise use of natural resources. This will be achieved through development of projects, conservation education, and cooperation of landowners, agencies, and other political subdivisions of the state.

If you would like more information about us or our programs, visit our call our office at 505.832.1111 or visit our website at www.ctcswcd.org.

TORRANCE COUNTY SALELLITE OFFICE DATES

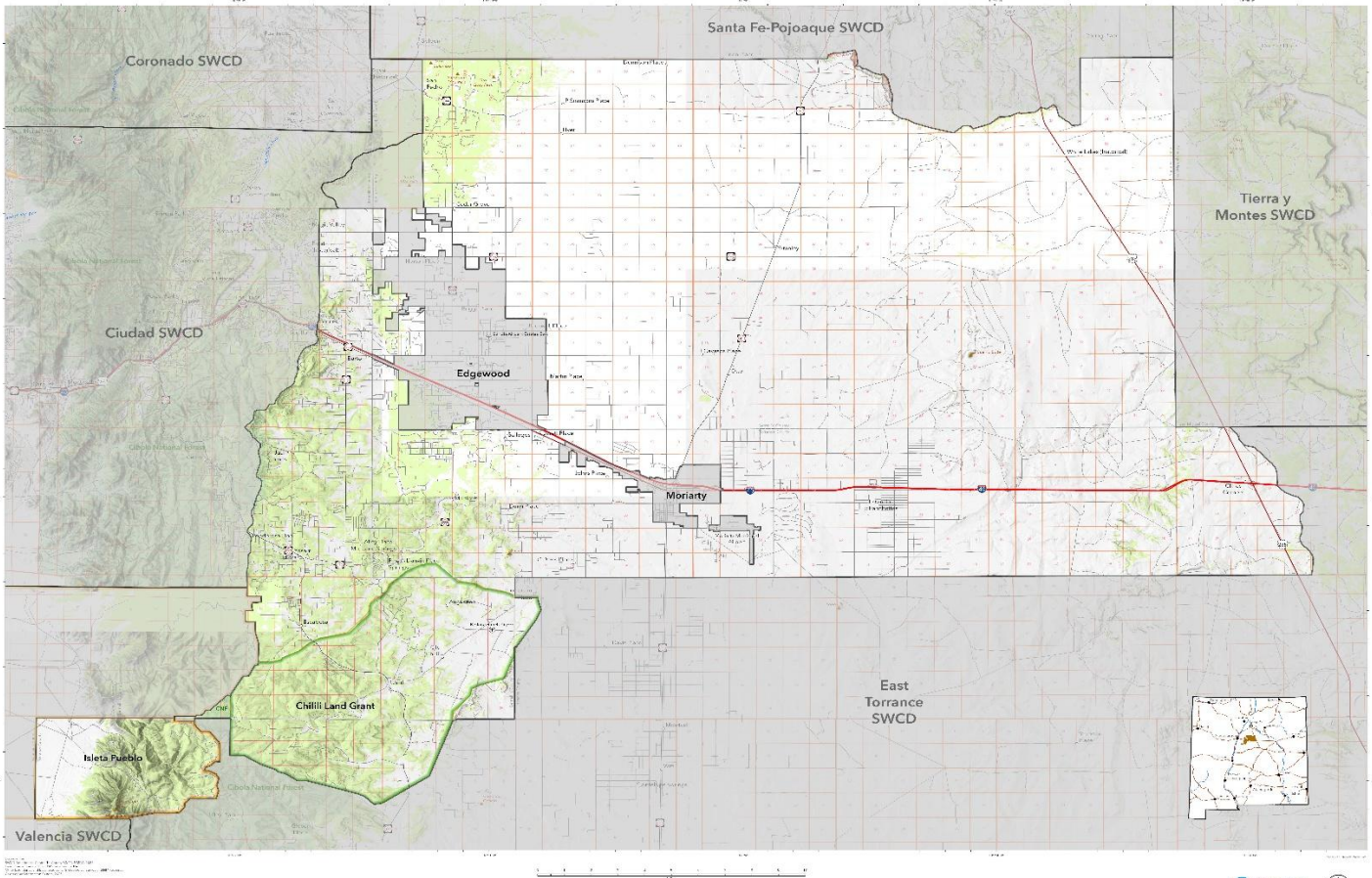
The Torrance County Treasurer, Assessor and Clerk and their respective staff will hold satellite office hours at the Central Tri-County SWCD office in Moriarty on the following dates:

April 29, 2026	9:30 AM - 2:00 PM
June 24, 2026	9:30 AM - 2:00 PM

Information on Exemptions & Special Method of Value along with address change forms will be available. Assessment questions and/or concerns will be addressed.

Questions regarding Voter Registration, Property Deeds, Liens, or Business Registrations will be answered. For more information, call the Torrance County Clerk's office at 505.544.4350.

Central Tri-County Soil and Water Conservation District



CALL THE
OFFICE AT
505.832.1111
FOR YOUR FREE
COPY OF OUR
SMALL
ACREAGE
GRAZING
GUIDE!

SMALL ACREAGE GRAZING
GUIDE



Sponsored by

CENTRAL TRI-COUNTY

SOIL & WATER CONSERVATION DISTRICT

(formerly Edgewood SWCD)

Serving areas of Moriarty – Edgewood – Stanley – Chillili – Clines Corners


conserving
natural resources
for our future

NMSU's ZIAMET WEATHER STATION

The ZiaMet Weather Station Network is a state-wide mesonet that monitors surface weather conditions and sub-surface soil conditions. The network first began operations in 1985 and was maintained with minimal external sponsorship. By 2015, the NM Climate Center was able to secure sponsorship from the National Mesonet Program, and this was the year we began using the ZiaMet moniker.

The NMSU's Weather Station is measuring live at the District Office located at 2506 Route 66 in Moriarty. Check out here:

<https://weather.nmsu.edu/ziamet/station/treswc/>

PARTNERING AGENCIES LOCATED IN SWCD OFFICE

The Santa Fe County Extension Office and the New Mexico State Land Office are holding office hours in Moriarty.

Their offices are located in the Central Tri-County SWCD Administrative Building located at 2506 Route 66, Moriarty.

Tom Dominguez, Santa Fe County Extension Agent holds Moriarty office hours Thursdays from 9:00 AM – 3:00 PM, and he may be reached at 505.832.1111 or in Santa Fe at 505.471.4711.

Ian Dolly, NM State Land Office District Resource Specialist holds office hours several times a week, and may be reached at 505.799.5162

WATER TRUST BOARD APPLICATIONS FOR FOREST THINNING ARE AVAILABLE YEAR-ROUND.

Application forms can be downloaded from our website, picked up at the District Office mailed, or emailed.

Visit our website at www.ctcswcd.org for more information or to download the application and guidelines.



CENTRAL TRI-COUNTY SWCD
2506 Route 66, Moriarty, NM
505.832.1111
www.ctcswcd.org

DISTRICT BOARD OF SUPERVISORS

David King ~ Chair

Juan Sanchez ~ Vice Chair

Bill King ~ Secretary / Treasurer

Vacant ~ Member

Mark Anaya ~ Member

Robert Coburn ~ Member

Wendy Schurman ~ Member

STAFF

Brenda Smythe ~ District Manager

Kelly Smith ~ District Technician

Karlyn Bates ~ Administrative Assistant

*“Essentially,
all life depends
upon the
soil... There
can be no life
without soil
and not soil
without life;
they have
evolved
together.”*

*Dr. Charles E.
Kellogg, Soil
Scientist and
Chief of the
USDA’s
Bureau for
Chemistry and
Soils.*

